

# Drake's Drinker



CAMPAIGN  
FOR  
REAL ALE



The Navy Inn, Plymouth



Admiral MacBride, Plymouth



The Royal Navy Arms, Plymouth



Lord High Admiral, Plymouth



## Spring 2019

Magazine of the Plymouth Branch of the Campaign for Real Ale

5000 copies printed and distributed for readership



## WELCOME TO THE PLYM VALLEY RAILWAY

The Plym Valley Railway is a 1.5 mile heritage railway situated on the outskirts of Plymouth, Devon.

Trains run every Sunday between Easter and Halloween and include Brake Van Rides or Marsh Mills-Plym Bridge by a steam or diesel locomotive.

### EASTER SUNDAY



### TEDDY BEARS' PICNIC



**For More Information:**

[www.plymrail.co.uk](http://www.plymrail.co.uk)

**Facebook: Plym Valley Railway**

21st April 2019

25th & 26th May 2019



# VESSEL

BEER SHOP

184 EXETER STREET - PLYMOUTH - PL4 0NQ  
07796667449

FACEBOOK - TWITTER - INSTAGRAM  
@VESSELPLYMOUTH

## PLYMOUTH'S INDEPENDENT BEER SHOP

SELLING OVER 180 DIFFERENT BEERS FROM SOME OF THE  
BEST BREWERIES IN THE UK AND WORLDWIDE IN BOTTLES,  
CANS AND ON TAP

A SHORT WALK FROM DRAKE CIRCUS ON EXETER STREET

BEER LIST UPDATED WEEKLY AT  
[WWW.VESSELBEER.CO.UK](http://WWW.VESSELBEER.CO.UK)

## NOW OPEN PERMENANTLY AS A BAR

OPENING HOURS:  
MONDAY- CLOSED  
TUESDAY TO THURSDAY 11AM TO 8PM  
FRIDAY & SATURDAY, 11AM TO 10PM  
SUNDAY, 11AM TO 8PM

# Hop Off The Press



**BEER IS MADE  
FROM HOPS**



**HOPS ARE PLANTS  
THEREFORE  
BEER=SALAD**

Welcome to the Spring 2019 edition of Drakes Drinker  
I would like to start off with some very exciting news :-

Plymouth Camra Beer and Cider Festival is back. This event will take place between Thursday 27th and Saturday 29th June 2019 at the Territorial Army Centre, Prospect Place, Plymouth, PL1 3BQ. It is planned to have up to 90 real ales and real ciders available. The beer festival will be at the same as Armed Forces Day, which will be held on Plymouth Hoe on Saturday 29th June. Further details to follow.

We have had a number of good social events (Salcombe Brewery visit, Branch Christmas Meal, Barbican Bimble and Exeter Beer Festival) since the last edition. Please see the diary page for future events.

I am still looking for new people to write article for the newsletter and people to help distribute them.

***Please drink safely and we hope to see lots of our readers attending our Beer Festival***

## *Sue's proper job*

**The vessel with the pestle  
holds the brew that is true.**



**DO any CAMRA film buffs, I wonder, recall a great Hollywood star of the fifties called Danny Kaye? If so you'll remember his iconic film *The Jester* and its oft quoted line "the vessel with the pestle holds the brew that is true."**

Just so our Vessel, the micropub and beer shop in Exeter Street, is true brew – lots of different vessels, lots of different brews, and owners with the true grit to turn it into the success it is today.

Sam and Katie Congdon preside over this pint sized 'pub' with its cache of around 200 bottles, draught beers and cider too – on my visit including Wiper and True's Bramble IPA 6.4%, Verdant Umbria Porter 6.6%, and Northcotts Rhubarb Cider.

And they don't simply satisfy our thirst for character ales and unusual – even rare – bottles; they organise all sorts of beery events as well. We gatecrashed their ticket only night last month where lucky guests got to taste different vintages including Geuze 2012 Mariage Parfait and – wow! – Thomas Hardy's Ale 1996 (I will be ever grateful to Katie for squeezing out a few extra sips for us).

As some of you no doubt know, on the second Sunday of the month they hold Sour Sunday with both lambics and sourdough bread from Jacka the baker in the Barbican, in November last year organised a beer festival at Plymouth Guildhall featuring ale from 23 noteworthy breweries across the country, stage an annual Oktoberfest with a German food platter of bratwurst and smoked cheese, and when I talked to Sam he was hoping to sign up a Cornish brewer and forager to hold an evening of beers brewed with foraged ingredients.



"We are massively into the beer scene," he says, and their passion for a decent pint has certainly taken them far afield. He recalls their first experience of a serious beer scene while living in Leeds – "the North Bar in Leeds was arguably the first beer café in the UK." And that sent them on beer trails throughout the UK then across the continent, Belgium and Germany in particular, and to 40 breweries in the US to mark Sam's 40th birthday.

He does, however, hail from Plymstock and ended up opening Vessel in 2016 to fill a gap in the market. "When we came back to see family we ended up bringing beer with us because we found there wasn't much of interest to buy locally."

Having identified premises in a row of shops in Exeter Street just beyond the city centre they struggled to get an alcohol licence but succeeded eventually and turned it into an uncluttered space with two long wooden tables and high corner bar. Wall shelves hold a library of bottles where you can browse.

Most micros don't do food but in summer Vessel does offer a board of three offbeat cheeses from Devon and Cornwall which should go well with their regional cider.



# BRANCH DIARY & EVENTS

Here is the branch diary of meetings, events and socials for the next few months. All branch social meetings start at 2000 unless indicated otherwise. Mid-week pub crawls usually start at 1900, other weekend socials as indicated.

For further details, please email or ring our Social Secretary, Andy Richardson, on [socials@plymouth.camra.org.uk](mailto:socials@plymouth.camra.org.uk) or 07546 937596 or our Branch Contact, Ian Daniels, [contact@plymouth.camra.org.uk](mailto:contact@plymouth.camra.org.uk) or 01822 616861.

For details of [Regional Meetings](#), [Events and Socials](#), members are asked to sign in and see [Members' Area](#).

---

## **The Blisland Inn, Minibus Social Saturday 23 March 2019 Guildhall Car Park**

A March branch social will take place to The Blisland Inn, Blisland, Jamaica Inn, Fox and Hounds, Bridestowe, Castle Inn, Lydford, and Trout and Tipple, Tavistock. meeting at 1000 at the car park of Guildhall Details £13 per person (£5 deposit required). Please contact Social Secretary

---

## **Branch AGM Saturday 6 April 2019 12:00 Fortescue Hotel**

The branch Annual General Meeting will take place in the Fortescue Hotel, 37, Mutley Plain, Plymouth PL4 6JQ, starting at 1200, followed by a social gathering. Items for the agenda should be made in writing, and seconded by another CAMRA Member, and submitted to the Branch Secretary, Ian Daniels, by 1200 on Saturday 30 March 2019, on [secretary@plymouth.camra.org.uk](mailto:secretary@plymouth.camra.org.uk) Both membership names and membership numbers must be included.

This meeting is only open to fully paid-up CAMRA members, and, as such, Membership Cards are required and will be checked prior to the start of the meeting.

Buffet food is not available, but attendees may bring their own, or buy locally.

Branch Social Saturday 27 April 2019 12:00 Test Pub Fictitious Venue, Somewhere

An April branch pub crawl will take place at Venue TBC, starting at 1200. Please check back later nearer to the time, or contact our Social Secretary, Andy Richardson, on [socials@plymouth.camra.org.uk](mailto:socials@plymouth.camra.org.uk)

---

## **All Welcome !**

Plymouth Beer and Cider Festival 2019 Thursday 27 – Saturday 29 June 2019 Territorial Army Centre  
The Plymouth Beer and Cider Festival sees a return to the city after a two year break, with another venue. It will take place at the Territorial Army Centre, Prospect Place, The Hoe, Plymouth, PL1 3BQ between Thursday 27th and Saturday 29th June 2019, dates and times TBC, and subject to contract.

It is planned to have up to 90 real ales and real ciders available. Further details to follow.

## **The first in a new series where we find out a bit more about some of the local pub landlords.**

First up is Neil Satchwell owner of the Ferry House Inn, Wolesley Road, Saltash Passage, PL5 1LA.



### **How did you get into this industry?**

It was through my local pub, the couple who ran it let me work with them for a couple of years, which was fantastic giving me a real insight to what's involved in running a pub, the good the bad and the ugly.

### **First or most memorable ale?**

My first pub was in Burton-on-Trent where in those days it was a choice between Bass or Pedigree. It was a Marston's house so it had to be Pedigree still love it now.

### **What is the most enjoyable aspect of running a pub?**

Meeting some really interesting people from all walks of life. You never know who's going to walk in.

### **What is the least enjoyable aspect of running a pub?**

So much paperwork which I must admit Clair does most of it.

### **Explain your beer choice?**

We have three regular beers Dartmoor Jail Ale, Sharp's Doombar and Atlantic. All sell well which is important to maintain the quality. We also have the occasional guest ale. We also have recently acquired a Cask Marque accreditation which we are really proud of.

### **What sort of community / clientele does your pub serve?**

We have a real mix of people coming in, from locals of all ages to guests that arrive from all over the world to stop in our Bed & Breakfast.

### **What makes your pub different?**

We probably have one of the best views in Plymouth, plus really good staff that will go the extra mile to make sure customers leave happy.

### **How do you see the pub industry in the future?**

The industry has changed so much and not always for the better. We need the government to really help pubs with business rates and taxes which need updating to make it fairer to stop the closures before we lose to many more pubs.





# CAMRA's **GOOD** **BEER** **GUIDE** 2019

Sponsored by



UK's Best-Selling  
Beer and Pub Guide







## *Drake's Drinker Advertising Rates*

Page Area	Single Edition	Four Editions
One quarter page	£50.00	£180.00
Half page	£95.00	£320.00
Full page	£145.00	£500.00
Page 2	£160.00	£520.00
Inside back cover	£160.00	£520.00
Back page	£190.00	£600.00

### **Copy Deadline:**

Future Dates: 6 May 2019; 5 August 2019; 4 November 2019; 3 February 2020. All Mondays

### **Publication Date:**

Future Dates: 20 May 2019; 19 August 2019; 18 November 2019; 17 February 2020. All Mondays

**Payment Methods:** cash or cheque (made payable to Plymouth and West Devon CAMRA); other payment methods – by prior arrangement (ie electronic transfer)

**Advertising copy:** to be emailed to Advertising Manager, Andrew Richardson, details below.

**Advert format:** PDF, MS Word preferred, although any accepted.

Advert max file size: if emailed, max size is determined by email client, usually less than 8MB. If larger file size, supply on disc/flash drive (which will be returned).

### **Contact details:**

Drake's Drinker Editor: **Andrew Richardson**

Email [editor@plymouth.camra.org.uk](mailto:editor@plymouth.camra.org.uk) or ring **07546937596**

Advertising Manager: **Andrew Richardson**

Email [advert@plymouth.camra.org.uk](mailto:advert@plymouth.camra.org.uk) **07546937596**



**CAMPAIGN  
FOR  
REAL ALE**

### **DISCLAIMER**

*The views or opinions expressed in Drake's Drinker are not necessarily those of the campaign for real ale or the editor.*



## Pub & Brewery News – January 2019

Wednesday 9 January 2019

The following pub and brewery news was reported at the Branch Meeting on Wednesday 9 January 2019 (repeat of the December committee meeting news, plus extra).

**Yelverton Golf Club** gained cask marque accreditation in September, serving Doom Bar plus guest; Woodside, city centre closes at 2359 in Friday eves; **Falstaff Inn**, Southway, now serves Doom Bar and lunchtime food daily; Who'd Have Thought It Inn no longer gives a **CAMRA** Discount on real ales or ciders; **Maritime Inn**, Barbican, closes at 2359 on Sundays; **Leaping Salmon Inn**, Horrabridge, reopened, serving a selection of constantly-changing local real ales; **Swan Inn**, Noss Mayo, has reopened under new licensees; **Friary Vaults Social Club**, St Judes, has reopened as Friary Vaults, a public house, also under new licensees; Tap Tinn, a craft beer bar and bottle shop, has opened in Tavistock and is open from 1200-2200 Wed-Sun, but accepts card payment only; **Grenville Hotel**, St Judes, is under new licensees – Good Luck to all new publicans in their new ventures!

### Cask Marque Accreditation:

Has been gained by **Rising Sun Inn**, Compton, and the **King's Arms**, Oreston. However, the **Ship's Tavern**, Elburton, no longer has accreditation.

### Brewery News

The long-awaited 6 BBL plant has now been installed at **Stannary** in Tavistock. February 2019

(a) Pub and Brewery News: (a) **Carpe Diem** has changed its name to **Crafty Half** (it has been shut for two years). It has four cask ales. (b) **The Cherry Tree** is getting a new landlady soon. They have two pumps at present with the potential for four. (c) **The Explorer** in Tavistock closed in January and is now part of The Venue, centered around the upstairs room. (d) **The Tavistock Inn** now sells Holsworthy Ales alongside Jail.



# CREAM ON TOP

DEVON AND CORNWALL MIGHT  
DISAGREE ABOUT A CREAM TEA.

BUT WE CAN BOTH AGREE  
ON THE PERFECT PALE ALE.



---

QUALITY SPEAKS FOR ITSELF

---

# **Social outing 17th Nov**

## **Salcombe Brewery visit and 6 Pubs**

*By Bob Holmes*

On Saturday morning 17th of November, we started to assemble outside the Plymouth Guildhall for a 10a.m. hired mini coach to take us on our trip into the South Hams. We set off on a dry cool morning, stopping at Plymstock to pick up some more of our party, giving us a total of 23 onboard. At approximately 1055a.m. we arrived at the village of Churchstow, pulled up opposite the Church House Inn. Two of our party who were not doing the brewery tour got off the coach to enter the pub, we would meet up with them later.



We arrived at the Brewery 5 minutes later and were met by the general manager, Mark Higgs. Then we all went into the taproom bar, where Mark, who previously had worked at other breweries including Dartmoor, gave us talk on the brewery. We were given a glass of their Amber ale. The brewery is at Ledstone about 300 metres from the A381 main road. A purpose built modern eco-friendly building on top of a disused waterboard reservoir, which they currently draw 50% of their water through a borehole for their brewing. The current owners took over from Quercus brewery and moved to the current location in 2017. John and Gerry Tiner came on numerous family holidays in Devon and wanted to take over the brewery after finding out the previous owner of Quercus wanted to pull out of the business.

The brewery produce Devon Amber(best bitter) 3.8%, Lifesaver (strong amber ale) 4.8%, Salcombe gold(golden ale) 4.2%, Seahorse (amber ale) 4.4%, Shinglebay (golden ale) 4.2% all available in bottles or cask. They also do Salcombe pale ale 4.6% in bottle and kegs. Seasonal ales in Riptide (sweet malty winter ale) 5%, Christmas tide 4.9% and Stormwatch 4%.

We moved from the taproom into the brewhouse where a long table nestled between the fermentation tanks and the other brewing vessels was set out for





us to sit at. On the table in large jugs was Stormwatch ale for us to drink whilst brewer Chris Lang took over from the general manager to talk us through his role and insight into brewing. We then were given fresh jugs full of Christmas tide while enthusiast Chris, who was filling in for head brewer Sam Beaman continued his question and answer session. We were given a wholesome cold buffet spread whilst we supped their freshly brewed Christmas tide ale. We moved back into the taproom where we were all given a glass of their keg beer, the Pale ale. Having finished this we was shown their cellar/storage area. We finished off by going through their brewery shop where several on the tour made purchases. I have got to state, what a brilliant brewery visit, the staff were so knowledgeable, passionate, enthusiastic and made us very welcome.



Austell brewery owned pub, which this day had Proper job 4.5%, Trelawney 3.8% and Tribute 4.2%. We had a quick drink and got back on the bus including the two who missed out on the brewery tour.

Back on the bus for the short journey back to Church House Inn arriving at 2p.m. at this grade 2 listed building (circa 1250), located on the A379 main road just under 2 miles north of Kingsbridge. Initially the building was built for Benedictine monks, but they have long gone. A St

Arrived at our next destination, the Fishermans Rest at Aveton Gifford at approx 2.30p.m. A choice of Otter ale 4.5%, Otter bitter 3.8% and Tribute 4.2% were available. A large village pub with darts and pool table with a big carpark close to the river on the edge of the village. Our next stop was at the Ship Inn at Ugborough



arriving through their doors at 3.30pm. A pub renown for good food, there was a lovely smell of cooked seafood in the air as we entered. Served at the bar was



Tribute 4.2%, St Austell Cornish pale ale 4.2% and Bath Gem ale 4.1%. I had nice Gem ale before leaving to do the short walk down through the village to the Anchor Inn, this pub serves Sharps Doom bar as a regular ale with the guest ale on this day being Salcombe Stormwatch 4%. We were attracted to a cocktail on their board called "Doom-tini". Described as a man cocktail with

Doom bar ale, spiced rum, lime and angostura bitters, but the £5.50 price, plus the Doom bar put us off.

Back on the coach we did a head count then set off to Avonwick. Arriving at 4.45pm at the Avon Inn. Getting off in their large carpark we all piled into the restaurant lounge bar knowing the small snug bar would not be big enough for 23 thirsty people. They have 3 hand pumps, but on this occasion there were only two ales tapped, Dartmoor Jail 4.8% and Dartmoor Legend 4.4%. There were Real ciders available but I went for the Legend which was a very nice pint. After a good 40 minutes at this pub we all boarded the bus for our last pub.

We drove into Bittaford to the Horse and Groom. This is one of my favourite country pubs in the





Plymouth Camra branch area. A free house, family owned with a real ale enthusiast licensee who hails from France. Yes, Oliver (Olly) a Frenchman who knows his ales! We had a choice of Jail 4.8%, South hams Blonde ale 4.4%, Otter ale 4.5%, Horse and Groom ale (house ale from Hunters brewery) 4% and Dartmoor Discovery No5 black porter (from brewers small batch range) offer Camra discount on ales, do 3 third

4.5% They also serve several real ciders, pint measures so you can try three beers for the price of a pint. They do a steak meal deal for two for a tenner, Monday to Fridays. After a good half hour we were back on the bus to get back into Plymouth before the driver's hours ran out. A happy day by all, well done Salcombe brewery, all our pub hosts and our social secretary for organising a good day out.



## Countryman Cider



*Our shop at Milton Abbot,  
nr Tavistock PL19 0QR  
is open Mon -Sat, 10 - 5 pm.  
Trade enquiries 01822 870226.*

*Also distribution within Plymouth,  
by Summerskills Brewery, on 01752 481283.*



# ***IT'S THE BEER TALKING:***

## **Adventures in Public Houses**

### ***Ian Clayton***

I've always written close to home. When I first started writing, everybody I asked said that I should write about what I know about. I've stuck to that ever since, so all of what I write takes place where I'm from. Wherever I have lived, I have never been more than a stone's throw from a local pub. My new book *It's The Beer Talking: Adventures in Public Houses* comes out at the end of February. I suppose the title tells you most of what you need to know about what is inside its covers. Yes it's about beer and pubs and because it's a memoir, it's about what I've got up to in ale houses over the years. I hope it's funny. I wanted to write a comedy, so it would be a bit of a bugger if it didn't make folk laugh. There are one or two sad bits in it as well, because even in pubs, life isn't always funny ha ha. Like my other writing, it is based on memories and emotions and characters I have known. Most of it is true, some bits are made up and the rest, well, if it isn't true, it ought to be!

I've written a lot of books, but I'm not always sure what to say when people ask me what my books are about. Perhaps my best known book is *Bringing it all Back Home*. It's about music. All sorts of music, from music hall to the blues and pop. Then again it's not really about music at all; it's about where music has taken me and how it shapes me. Another more recent book is *Song for My Father*. I generally say that one is a book about my dad. Yet I didn't know my dad for most of my life, so it's a book about looking for him, what happened in the few months after we were reunited and mostly about what happened when we weren't in each others lives. It's *The Beer Talking* follows a similar template.

There's plenty of beer in it, a lot of laughter, one or two tears and now and again a bit of bawdy banter. It's just a book of stories that take place against a backdrop of the public house. These stories are about the joy of joining in, celebrating who we are and the quest to find the perfect pint. There are journeys here and discovery, but because our favourite pubs are usually in our own back yard, it's a book that takes place near home. In many ways it's a book that takes delight in localness, the simple pleasure of where we are from, wherever that might be.

The book starts with my first taste of beer, in a smoke-filled working men's club, then rattles like a boxful of dominoes through more than half a century of backstreet boozing all over the world in that rare old haunt we call the public house. In a time when local





pubs are closing down at an alarming rate, the book is a bit of a call to treasure them. I say this because I believe that pubs are like libraries. More than any other buildings near where we live, they are storehouses of our communal knowledge. At times snapshots of our neighbourhood, at other times a refuge from what's going on outside, but always somewhere familiar and welcoming. I love the pub most of all, because that is where over the years I have found a lot of friendship. Come to think of it, *It's The Beer Talking* is a book about friendship. As a matter of fact, all of my books are about friendship. If you like books about beer, pubs, fun and friendship, you might want to give it a try.

**Ian's book is brimming with laughter, tall stories, great memories and endless rounds of wonderful beer. It's also a call to arms to save this unique institution. Roger Protz, Editor Good Beer Guide 2000-2018**

**It's The Beer Talking: Adventures in Public Houses** is published by Route on 28th February 2019. For more details visit [www.route-online.com](http://www.route-online.com)





SHINGLE BAY	LIFSAYER	DEVON AMBER	SEAHORSE	GOLD
~~~~~	~~~~~	~~~~~	~~~~~	~~~~~
ABV 4.2%	ABV 4.8%	ABV 3.8%	ABV 4.4%	ABV 4.2%

**A BEER FOR EVERY OCCASION**

Estuary View, Ledstone, Kingsbridge TQ7 4BL  
 T 01548 854888 E [contact@salcombebrewery.com](mailto:contact@salcombebrewery.com)  
[salcombebrewery.com](http://salcombebrewery.com)



**SALCOMBE**  
 BREWERY CO

# DARTMOOR'S FINEST

The UK's highest brewery at 1,465ft above sea level, Dartmoor Brewery creates handcrafted cask conditioned real ales with authentic Dartmoor character from its heartland in Princetown.

Since its formation in 1994, Dartmoor Brewery has gone from strength to strength producing top quality ales using the finest local ingredients, which remain highly regarded across the South West by licensees and real ale drinkers.




Dartmoor Brewery Ltd, Station Road, Princetown, Devon PL20 6QX  
 Telephone: 01822 890789 Fax: 01822 890798 [www.dartmoorbrewery.co.uk](http://www.dartmoorbrewery.co.uk)

# CHARITY APPEAL

**This newsletter is FREE and is written, produced and distributed by volunteers. If you have appreciated their efforts, please make a donation to your pub's charity appeal.**



# CAMRA DISCOUNT SCHEME

The Campaign for Real Ale has over 1,000 members in the Plymouth area, and over 190,000 members nationwide. All of these are thirsty real ale drinkers, and love a good deal!

*The CAMRA Discount Scheme enables pubs to promote their business to our members and hopefully encourage more trade. The discount given will be advertised free of charge in our branch magazine, **Drake's Drinker**, as well as on this website and the National CAMRA website. We can also provide posters to advertise the offer to visitors. If you are the licensee of a pub and are interested in taking part in this scheme, please contact our Branch Vice Chairman, Ian Dickinson, at [vicechairman@plymouth.camra.org.uk](mailto:vicechairman@plymouth.camra.org.uk)*

The following **pub discount information** has been received by Plymouth CAMRA and is given in good faith, but is liable to change at short notice. Some discounts may be modified or restricted when special promotions are on offer.

PUB NAME	ADDRESS	DISCOUNT
Boringdon Arms	Boringdon Terrace, Turnchapel, Plymouth, PL9 9TQ	10p/pint
Brass Monkey	Royal Parade, City Centre, Plymouth, PL1 1DS	10%/pint
Bread & Roses	62 Ebrington Street, City Centre, Plymouth, PL4 9AF	10%/pint
China House	Sutton Wharf, Coxside PL4 0DW	20p/pint
Dolphin Hotel	14, The Barbican, Plymouth, PL1 2LS	15p/pint
Fishermans Arms	Lambhay Hill, Barbican, PL1 2NN	10%/pint, 20% on food
Fortescue Hotel	Mutley Plain, Plymouth, PL4 6JQ	10%/pint and on half pint
Golden Hind	Mannamead Road, Plymouth, PL3 5RJ	10%/pint and on half pint
Horse & Groom	Exeter Road, Bittaford, Ivybridge	10p/pint
Jack Rabbit	7-9 Howeson Road, Derriford PL6 8BD	20p/pint
Miner's Arms	Hemerdon, near Plympton, PL7 5BU	30p/pint
Minerva Inn	31, Looe Street, Barbican, Plymouth PL4 0EA	* See below
Noah's Ark	32A, Courtney Street, City Centre, Plymouth PL1 1EP	10%/pint, on Guest Beers (Not Green King IPA)
Nowhere Inn	Gilwell Street, City Centre, Plymouth, PL4 8BU	10%/pint
Olde Plough Inn	Fore Street, Bere Ferrers, PL20 7JG,	10%/pint, for both real ale & cider
Pub On The Hoe	159 Citadel Road, The Hoe, Plymouth, PL1 2HU	10%/pint
Sir Joshua Reynolds	25 Ridgeway, Plympton, PL7 2AW,	10p/pint, 5p/half
Stoke Inn	Devonport Road, Stoke, Plymouth, PL3 4DL,	10%/pint
Tamar	Morshead Road, Crownhill, Plymouth, PL6 5AD	10%/pint
Who'd Have Thought It Inn	Milton Combe, Yelverton, PL20 6HP	6%/pint
<b>W</b> Britannia Inn	2 Wolseley Road, Milehouse, Plymouth, PL2 3BH	
<b>W</b> Gog & Magog	Southside Street, Barbican, Plymouth, PL1 2LA	
<b>W</b> Mannamead	Mutley Plain, Plymouth, PL4 6JH	
<b>W</b> Queen's Head Hotel	80 West Street, Tavistock, PL19 8AQ	
<b>W</b> Stannary Court	Ridgeway, Plympton, PL7 2AW	
<b>W</b> Union Rooms	Union Street, City Centre, Plymouth, PL1 2SU	



## KEY

- \* **Minerva Inn** offers a discount on all real ales via a monthly Loyalty Card, which costs £1.00. The card is valid between 1130 - 1500 Mon - Fri. Real ales are then £3.00/pint.
- W** prefix applies to all JD Wetherspoon outlets which accept CAMRA Member vouchers for both real ale and real cider/perry – please check the front of the voucher to check that it is still in date!

# NATIONAL BEST BAR NONE AWARD WINNERS ANNOUNCED



*BBN Award Winners 2019\_ L-R - Tracey Ford; Laura Mason; Simon Barker; Garreth Robinson; Ben Dixon; Alison Watkin; Ann Williams; Cat MacDonald; Simon Lane*

**Plymouth's Best Bar None scheme was celebrating once again this year, having scooped the top prize for 'Best Overall Scheme' for the second consecutive year in National Best Bar None Awards held at the House of Lords on Monday 4th February.**

Sheffield was highly commended in the same category and Wrexham and Barnsley also received top category awards; Wrexham for 'Most Innovative Scheme' and Barnsley for 'Best New Scheme'. Simon Lane, City Licensing Manager for Exeter, was singled out for the 'Outstanding Commitment Award'.

Backed by the Home Office, Best Bar None has been working collaboratively with the alcohol industry, local authorities and the police for over 15 years. It promotes responsible drinking and higher professional licensing standards in bars, pubs, hotels, clubs and entertainment venues in over 70 towns and cities across the UK.

Home Secretary, The Rt Hon Sajid Javid MP, said: "People should be able to enjoy a night out safely and responsibly without the fear of being a victim of alcohol-related crime and disorder. The Home Office is committed to addressing this and I'm pleased to back the Best Bar None scheme and the partnership working it promotes. I also value the leadership Best Bar None has shown in raising the standards of licensed premises."

The awards ceremony was hosted by chairman of Best Bar None, Lord Smith of Hindhead, who said: "I am delighted to report that Best Bar None continues to go from strength to strength. Last October saw the launch of the new Central Scheme, which I am delighted to say means that Best Bar None can now accommodate venues that fall outside of the existing regional schemes. This is a major step forward for the scheme and we will be working hard to extend its reach in 2019."



“Other exciting news for this year is the launch of a pilot scheme with Manchester Airport Group. The aim of this partnership is to further improve standards of airside alcohol retailing across the UK’s biggest airport group and improve the travel experience for its 60 million passengers.

“The national awards truly are the highlight of the Best Bar None calendar. To be named as one of the best performing schemes on a national level is a fantastic achievement and I would like to congratulate all our winners for 2019. I look forward to seeing continued innovation from the schemes over the coming year.”

The National Awards are the highlight of the Best Bar None calendar. The competition carries a prize fund of over £5,000 split across three categories:

**1. ‘Best Overall Scheme’, presented to the scheme that has had the biggest impact on the local area (£3,000)**

**2. ‘Most Innovative Scheme’, awarded to the most creative concept or initiative introduced to make a difference in the local area (£1,000)**

**3. ‘Best New Scheme’, open to any scheme that has been running for less than 18 months (£1,000)**

**4. ‘Outstanding Commitment Award’, presented to an individual who has shown commitment above and beyond what would normally be required in support of their own Best Bar None scheme or nationally (£250)**

The scheme is funded by the industry and its main sponsors and supporters are: Diageo, Heineken UK, Pernod Ricard UK, Asahi, EI Group, JD Wetherspoon, Mitchells & Butler and Stonegate Pub Company.

#### Best Overall Scheme

Plymouth is a self-funded scheme that has been running for over 10 years. In 2018 it increased the number of accredited venues, actively engaged in the scheme, from 55 to 60, extending its reach to businesses which don’t sell alcohol yet still have a role to play in the late night economy, including two city centre MacDonald’s restaurants.

The scheme continues to evolve and innovate, introducing new initiatives to reduce crime and disorder and improve the safety of those using licensed premises. Notable achievements in 2018 were the launch of a Taxi Marshall scheme and a Safe Bus project, involvement with police in an innovative scheme to manage incidents of drink spiking, and the implementation of standardised procedures to deal with drugs and fake ID.

Over 35 venues and 70 door staff took part in Ask for Angela training – an initiative set up to encourage people who feel vulnerable or threatened on a night out to discreetly ask bar staff for help. A continual programme of ‘mystery visits’ ensures that venues are correctly managing the initiative.

The judges were impressed with the scheme’s work with Plymouth University, which has helped to significantly reduce the number of incidents involving students. Flyers are handed out at the Freshers’ Fayre advising students to ‘look for the BBN logo’ and a Best Bar None representative attends an open day to explain what it means to new students and their parents. The University of Marjon has also now invited BBN Plymouth to work with its students.

Crime statistics show a reduction in alcohol-related crimes of 19.1% overall, and 16.6% during Evening and Night Time Economy (ENTE) hours compared with last year, as well as a massive reduction in drunkenness, which was down by 54%.

# PUBLIC TRANSPORT LINKS

## Local Bus Companies

If you have any questions about public transport in and around Plymouth, please contact our Public Transport Officer, George McCarron, on [pto@plymouth.camra.org.uk](mailto:pto@plymouth.camra.org.uk)

### **Plymouth CityBus - Visit [www.plymouthbus.co.uk](http://www.plymouthbus.co.uk)**

Plymouth Citybus Limited, 1 Milehouse Road, Milehouse, Plymouth, Devon, PL3 4AA  
telephone 01752 662271

Please email [customer.services@plymouthbus.co.uk](mailto:customer.services@plymouthbus.co.uk)

### **Stagecoach South West - Visit [www.stagecoachbus.com](http://www.stagecoachbus.com)**

Stagecoach South West, Belgrave Road, Exeter, Devon, EX1 2LB

Telephone 01392 427711

disability helpline 01392 889749

Please email [southwest.enquiries@stagecoachbus.com](mailto:southwest.enquiries@stagecoachbus.com)

### **Tally Ho Coaches - Visit [www.tallyhocoaches.co.uk](http://www.tallyhocoaches.co.uk)**

Tally Ho Coaches, Station Yard Industrial Estate, Kingsbridge, Devon, TQ7 1ES

Telephone 01548 853081

Please email [info@tallyhocoaches.co.uk](mailto:info@tallyhocoaches.co.uk)

### **Target Travel - Visit [www.targettravel.co.uk](http://www.targettravel.co.uk)**

Langage Business Park, Plympton, Plymouth, Devon PL7 5JY

Telephone 01752 242000

Please email [admin@targettravel.info](mailto:admin@targettravel.info)

### **Country Bus - Visit [www.countrybusdevon.co.uk](http://www.countrybusdevon.co.uk)**

King Charles Business Park, Old Newton Road, Heathfield, Newton Abbot, Devon TQ12 6UT

Telephone 01626 833664

Please email [info@countrybusdevon.co.uk](mailto:info@countrybusdevon.co.uk)

### **Traveline South West Journey Planner - Visit [www.travelinesw.com](http://www.travelinesw.com)**

Combine journey's by bus, train, coach and ferry for travel in the south west.

Telephone 0871 200 2233 (*calls cost 10p/min from a BT landline*)

### **Train Companies - Visit [www.gwr.com](http://www.gwr.com)**

Great Western Railway

Write to GWR Customer Support, FREEPOST RSKT-AHAZ-SLRH, Plymouth PL4 6AB

### **Cross Country Trains - Visit [www.crosscountrytrains.co.uk](http://www.crosscountrytrains.co.uk)**

Office: XC Trains Limited, Admiral Way, Doxford International Business Park, Sunderland, SR3 3XP

Trains times and fares 03457 484950 (24 hours) <http://www.nationalrail.co.uk>

### **National Rail Enquiries – visit [www.nationalrail.co.uk](http://www.nationalrail.co.uk)**

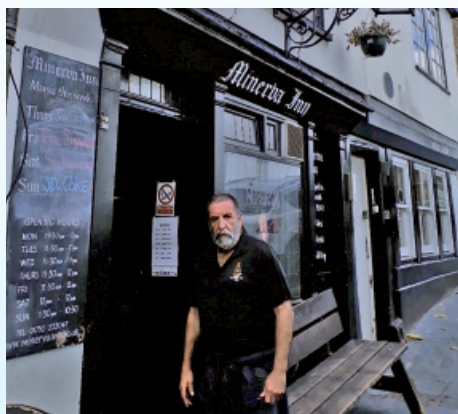
Train times and fares 03457 484950 (24 hours)

# MAL DE MER

I have been looking forward to a Barbican trip since Mal and I started our trips. The summer weather kept going long enough for a boat trip there on 28 September 2018. Sutton Harbour very kindly made an overnight berth available for Doris at the Guys Quay end for which Mark Brimacombe and his staff have my thanks. So on the Friday morning Mal and I set off for Sutton Harbour and the Barbican and through Sutton Lock. With Doris all nicely secured, we started our tour.



First stop the Minerva, a long standing GBG entry. Is it Plymouth's oldest pub? Mal queries this, and subsequent enquiry with Chris Robinson indicates that the Minerva is the oldest building currently housing a pub, while the oldest city pub is the Kings Head, and the oldest in the Plymouth area is the Seven Stars at Tamerton Foliot. There were 4 ales on offer, St Austell, Tribute, Autumn Indie, HSD, and Cotleigh Barn Owl plus 2 ciders Old Rosie and



Broadoak Old Bristolian. You can sign the ceiling to record your visit; the landlord says the ceiling has been replaced but they did a good job as it looks original.

Next stop was The Three Crowns. We were served by 2 very pleasant ladies. First pint was a bit past it but it was quickly changed and a good pint of Tribute (I think) followed on.



Then on to the Queen's Arms. In my experience this pub has always served a good pint of ale with a good choice. This time there was Tribute, Doom Bar, Jail, and Otter Ale and I opted for the latter. Good pint too. Mal met his match in Breton barmaid Aude who gave Mal as good as he gave out. Well done, Aude. Round 1 to you.



We then continued down Southside Street to The Navy where we were served by landlady Janette. The ales were Doom Bar and Atlantic. This is a nice pub and we were made most welcome. Mal was particularly impressed by the collection of Falklands photographs which are of excellent quality and worth checking out.



And over the road is what is for me, and I am sure for many of Plymouth's CAMRA membership, the main event – The Dolphin Hotel. Sadly Billy passed away last year although I did have the honour of meeting him and being shown the taproom from which the excellent ales are dispensed. What an institution he has created. Mal and I met Billy's niece, Michelle, from Clonakilty who is very familiar with the pub over many years and is determined to maintain the tradition Billy has created. She is a permanent fixture with her young son Reuben and she looks forward to keeping this great pub as it is for many years to come. For me the beer quality





is second to none and I am always confident of receiving a foaming pint straight out of the barrel. The beers available are Bass, Betty Stogs, Doom Bar, Sea Fury, Atlantic, and Jail. I must also thank manager Darron who set up our meeting but had a rare sick day at the time of our visit.

And so on to our last pub of the tour, The Fishermans Arms on Lambhay Street. The Fishermans is a GBG entry and has a varying range, but you can always find The Famous Mr Jones, brewed specially for the pub by Summerskills. Mr Jones is the pub's miniature schnauzer and you will generally find him on duty ably assisted by Donna and Lee. Ales also available were Dartmoor Dragon's Breath and

Hanlons Port Stout. And not to be forgotten is the pub's excellent food and for me the best Sunday lunch in the area, a real treat.



At this point we thought it best to call it a day, so home we walked to Millbay and Stonehouse, returning the next morning to collect Doris.

Open to all CAMRA members  
Free to attend

**DUNDEE**

**CAMRA  
Members'  
Weekend,  
AGM &  
Conference**

**Caird Hall**  
5th – 7th  
April 2019



Register at [agm.camra.org.uk](http://agm.camra.org.uk)

Hosted by Scotland &  
Northern Ireland Branches





**The LocAle Scheme** is a CAMRA initiative that promotes pubs stocking locally-brewed real ale. The scheme builds on the growing consumer demand for quality local produce and an increased awareness of “green” issues.

### **Avonwick**

Avon Inn Avonwick Avonwick TQ10 9NB

Turtley Corn Mill Avonwick Avonwick TQ10 9ES

### **Bere Ferrers**

Olde Plough Inn Fore Street Bere Ferrers PL20 7JG

### **Bittaford**

Horse & Groom Exeter Road Bittaford PL21 0EL

### **Brixton**

Foxhound Inn Kingsbridge Road Brixton PL8 2AH

### **Buckland Monachorum**

Drake Manor Inn The Village Buckland Monachorum  
PL20 7NA

### **California Cross**

California Inn California Cross PL21 0SG

### **Chipshop**

Copper Penny Inn Chipshop Chipshop PL19 8NT

### **Clearbrook**

Skylark Inn Clearbrook Clearbrook PL20 6JD

### **Dousland**

Burrator Inn Dousland Dousland PL20 6NP

### **Ermington**

Crooked Spire The Square Ermington PL21 9LP

### **Hemerdon**

Miner's Arms Hemerdon Hemerdon PL7 5BU

### **Hexworthy**

Forest Inn Hexworthy Hexworthy PL20 6SD

### **Holbeton**

Dartmoor Union Fore Street Holbeton PL8 1NE

### **Mary Tavy**

Mary Tavy Inn Lane Head Mary Tavy PL19 9PN

### **Meavy**

Royal Oak Inn Meavy Meavy PL20 6PJ

### **Milton Combe**

Who'd Have Thought It Inn The Village Milton Combe  
PL20 6HP

### **Modbury**

Exeter Inn Church Street Modbury PL21 0QR

Modbury Inn Brownston Steet Modbury PL21 0RQ

### **Noss Mayo**

Ship Inn Noss Mayo Noss Mayo PL8 1EW

### **Plymouth**

Artillery Arms 6 Pound Street Plymouth PL1 3RH

Brass Monkey 12-14 Royal Parade Plymouth PL1 1DS

Bread & Roses 62 Ebrington Street Plymouth PL4 9AF

Brewery Tap 99 Edgecumbe Street Plymouth PL1 3SZ

Britannia Inn 2 Wolesely Road Plymouth PL2 3BH

Clifton Inn 35 Clifton Street Plymouth PL4 8JB

Fawn Private Members Club 39 Prospect Street Plymouth  
PL4 8NY

Fishermans Arms 31 Lambhay Street Plymouth PL1 2NN

Fortescue Hotel 37 Mutley Plain Plymouth PL4 6JQ

Gog & Magog 58 Southside Street Plymouth PL1 2LA

Golden Hind 2 60 Mannamead Road Plymouth PL3 5RJ

Kitty O' Hanlon's 5 St Andrews Street Plymouth PL1 2AH

Mannamead 61 Mutley Plain Plymouth PL4 6JH

Maritime Inn 19 Southside Street Plymouth PL1 2LD

Masonic Inn 65 Devonport Road Plymouth PL3 4DL

Minerva Inn 31 Looe Street Plymouth PL4 0EA

Noah's Ark 32a Courtney Street Plymouth PL1 1EP

Nowhere Inn 21 Gilwell Street Plymouth PL4 8BU

Plymouth Hoe Club 1-2 Osbourne Place Plymouth PL1 2PU

Porters 20-21 Looe Street Plymouth PL4 0EA

Prince Maurice 3 Church Hill Plymouth PL6 5RJ

Providence 20 Providence Street Plymouth PL4 8JQ

Pub On The Hoe 159 Citadel Road Plymouth PL1 2HU

Stoke Inn 43 Devonport Road Plymouth PL3 4DL

Swan 15 St Andrews Street Plymouth PL1 2AX

Thistle Park Tavern 32 Commercial Road Plymouth PL4 0LE

Union Rooms 19 Union Street Plymouth PL1 2SU

Waterloo Inn 30 Waterloo Street Plymouth PL1 5RS

West Hoe 24 Bishop's Place Plymouth PL1 3BW

## **Plympton**

Colebrook Inn Colebrook Road Plympton PL7 4AA

London Inn 8 Church Road Plympton PL7 1NH

Stannary Court 95-99 Ridgeway Plympton PL7 2AA

Union Inn 17 Underwood Road Plympton PL7 1SY

## **Plymstock**

Drake's Drum 19 Radford Park Road Plymstock PL9 9DN

## **Postbridge**

East Dart Hotel Postbridge Postbridge PL20 6TJ

Warren House Inn Postbridge Postbridge PL20 6TA

## **Princetown**

Dartmoor Inn Merrivale Princetown PL20 6ST

Plume Of Feathers Inn Plymouth Hill Princetown  
PL20 6QQ

Prince Of Wales Hotel Tavistock Road Princetown PL20 6QW

## **Ringmore**

Journey's End Inn Ringmore Ringmore TQ7 4HL

## **Shaugh Prior**

White Thorn Inn Shaugh Prior PL7 5HA

## **Sparkwell**

Treby Arms Sparkwell Sparkwell PL7 5DD

Welbeck Manor Hotel & Sparkwell Golf Course Sparkwell  
Sparkwell PL7 5DF

## **Tavistock**

Bedford Hotel 1, Plymouth Road Tavistock PL19 8BB

Queen's Head Hotel 80 West Street Tavistock PL19 8AQ

Trout 'N' Tipple Parkwood Road Tavistock PL19 0JS

## **Turnchapel**

Boringdon Arms 13 Boringdon Terrace Turnchapel PL9 9TQ

Clovelly Bay Inn 1 Boringdon Road Turnchapel PL9 9TB

## **Walkhampton**

Walkhampton Inn Walkhampton Walkhampton PL20 6JY

## **Wembury**

Odd Wheel Knighton Road Wembury PL9 0JD







## Contacts

**Branch Contact** Ian Daniels Email [contact@plymouth.camra.org.uk](mailto:contact@plymouth.camra.org.uk) ☎ 01822 616861

**Webmaster** Ian Dickinson Email [webmaster@plymouth.camra.org.uk](mailto:webmaster@plymouth.camra.org.uk)

**Branch Chairman** Position Vacant Email [chairman@plymouth.camra.org.uk](mailto:chairman@plymouth.camra.org.uk)

**Branch Vice Chairman** Ian Dickinson Email [vicechairman@plymouth.camra.org.uk](mailto:vicechairman@plymouth.camra.org.uk)

**Branch Secretary** Ian Daniels [secretary@plymouth.camra.org.uk](mailto:secretary@plymouth.camra.org.uk)

**Branch Treasurer** Alan Warden Email [treasurer@plymouth.camra.org.uk](mailto:treasurer@plymouth.camra.org.uk)

**Magazine Editor** Andrew Richardson Email [editor@plymouth.camra.org.uk](mailto:editor@plymouth.camra.org.uk)

**Pub Campaigns Co-ordinator** Position Vacant Email [pubnews@plymouth.camra.org.uk](mailto:pubnews@plymouth.camra.org.uk)

**Social Secretary** Andy Richardson Email [socials@plymouth.camra.org.uk](mailto:socials@plymouth.camra.org.uk) ☎ 07546 937596

**Press and Publicity Officer** Ian Dickinson Email [press@plymouth.camra.org.uk](mailto:press@plymouth.camra.org.uk)

**Cider Coordinator** Lee Norton Email [cider@plymouth.camra.org.uk](mailto:cider@plymouth.camra.org.uk)

**Membership Secretary** Alan Warden Email [membership@plymouth.camra.org.uk](mailto:membership@plymouth.camra.org.uk)

**Advertising Manager** Andrew Richardson Email [advert@plymouth.camra.org.uk](mailto:advert@plymouth.camra.org.uk) ☎ 07546937596

**Public Transport Officer** George McCarron Email [pto@plymouth.camra.org.uk](mailto:pto@plymouth.camra.org.uk)

**Young Members Rep** Position Vacant Email [youngmembers@plymouth.camra.org.uk](mailto:youngmembers@plymouth.camra.org.uk)

**Plymouth Pub of The Year Branch Committee** Email [plymouthpoty@plymouth.camra.org.uk](mailto:plymouthpoty@plymouth.camra.org.uk)

**What Pub Editorial Team** Email [WhatPub@plymouth.camra.org.uk](mailto:WhatPub@plymouth.camra.org.uk)

## Trading Standards

### Plymouth Trading Standards

Visit [PLYMOUTH TRADING STANDARDS](http://PLYMOUTH TRADING STANDARDS)

Telephone 01752 304147

Please email [trading.standards@plymouth.gov.uk](mailto:trading.standards@plymouth.gov.uk)

### Devon and Somerset Trading Standards

Visit [DEVON TRADING STANDARDS](http://DEVON TRADING STANDARDS)

Telephone 01392 381381 (from Devon)

Telephone 0845 3459181 (from Somerset)

Please email [tsadvice@devon.gov.uk](mailto:tsadvice@devon.gov.uk)

# New Chairman for the Campaign for Real Ale

The Campaign for Real Ale has announced its new chairman-elect as **Nik Antona**, who will take on the leadership of the organisation following its **Members' Weekend, AGM and Conference** to be held in Dundee in April.



**Nik Antona** takes over from **Jackie Parker**, who is stepping down after a year in the role, and after nine years as a member of CAMRA's National Executive.

Meeting in Hastings this month (February) CAMRA's National Executive elected Nik as chairman-elect. Based in Burton-on-Trent, Nik has been a National Executive member since 2009, and currently chairs the Finance and General Purposes Committee. He was a CAMRA Regional

Director for five years, representing the West Midlands.

Nik said: "I'm delighted and honoured by the confidence my National Executive colleagues have shown in me by electing me to take over as Chairman in April.

"Jackie has been a strong leader for the organisation and I'm keen to carry on where she will leave off - making sure CAMRA is effective in its national campaigns, especially in seeking much-needed reform of the Pubs Code, calling for a review of Business Rates on pubs and campaigning to get a reduction in beer tax on pints served in pubs.

Jackie said: "It's with great sadness that I choose to step down as chairman of the Campaign. It's the right time, however, as I come to the end of my third term as a National Executive member. I've spent nine years as a National Executive member and served as a Regional Director for three years prior to that. I believe it's healthy for an organisation to refresh its leadership regularly and now is the time to step aside and give someone else the opportunity to lead the Campaign."

CAMRA has almost 200,000 members nationwide. It is a volunteer-led, not for profit organisation representing the interests of real ale, cider and perry drinkers. Its democratically elected National Executive is made up of 12 unpaid directors, led by a chairman, which sets the strategic direction for the organisation.

# Join up, join in, join the campaign



You are just moments away from a year in beer heaven!

From as little as £25\* today, be part of the CAMRA community and enjoy discounted entry to around 200 beer festivals, exclusive member offers and more. Discover all the ins and outs of brewing and beer with fantastic magazines and newsletters, but even more importantly support various causes and campaigns to save pubs, cut beer tax and more.

## Join CAMRA today

Enter your details and complete the Direct Debit form below to get 15 months for the price of 12 for the first year and save £2 on your membership fee.

Alternatively you can send a cheque payable to CAMRA Ltd with your completed form, visit [www.camra.org.uk/joinup](http://www.camra.org.uk/joinup) or call 01727 798440. All forms should be addressed to Membership Department, CAMRA, 230 Hatfield Road, St Albans, AL1 4LW.

### Your details:

	Direct Debit	Non DD
Title ..... Surname .....	Single Membership £25 <input type="checkbox"/>	£27 <input type="checkbox"/>
Forename(s) .....		
Date of Birth (dd/mm/yyyy) .....	Joint Membership £30 <input type="checkbox"/>	£32 <input type="checkbox"/>
Address .....	(Partner at the same address)	
.....		
..... Postcode .....		
Email address .....	*For information on Young Member and other concessionary rates please visit <a href="http://www.camra.org.uk/membership-rates">www.camra.org.uk/membership-rates</a> or call 01727 798440.	
Tel No(s) .....	I/we wish to join the Campaign for Real Ale, and agree to abide by the Memorandum and Articles of Association these are available at <a href="http://camra.org.uk/memorandum">camra.org.uk/memorandum</a> <input type="checkbox"/>	

### Partner's Details (if Joint Membership)

Title ..... Surname .....	
Forename(s) .....	
Date of Birth (dd/mm/yyyy) .....	Signed .....
Joint member's Email .....	Date .....
Joint member's Tel No .....	Applications will be processed within 21 days of receipt of this form. 04/17

CAMRA CAMPAIGN FOR REAL ALE		DIRECT DEBIT	
<b>Instruction to your Bank or Building Society to pay by Direct Debit</b>		<b>The Direct Debit Guarantee</b>	
Please fill in the whole form using a ball point pen and send to: <b>Campaign for Real Ale Ltd, 230 Hatfield Road St. Albans, Herts AL1 4LW</b>		This Guarantee should be detached and retained by the payer.	
<b>Name and full postal address of your Bank or Building Society</b>		<b>Service User Number</b>	
To the Manager Bank or Building Society		9 2 6 1 2 9	
Address		<b>FOR CAMRA OFFICIAL USE ONLY</b>	
Postcode		This is not part of the instruction to your Bank or Building Society	
Names(s) of Account Holder		Membership Number	
Bank or Building Society Account Number		Name	
Branch Sort Code		Postcode	
Reference		<b>Instructions to your Bank or Building Society</b>	
Banks and Building Societies may not accept Direct Debit Instructions for some types of account.		Please pay Campaign For Real Ale Limited Direct Debits from the account detailed on this instruction subject to the safeguards assured by the Direct Debit Guarantee. I understand that this instruction may remain with Campaign For Real Ale Limited and, if so will be passed electronically to my Bank/ Building Society.	
		Signature(s)	
		Date	
		This Guarantee is offered by all banks and building societies that accept instructions to pay by Direct Debits	
		• If there are any changes to the amount, date or frequency of your Direct Debit The Campaign for Real Ale Ltd will notify you 10 working days in advance of your account being debited or as otherwise agreed. If you request The Campaign for Real Ale Ltd to collect a payment, confirmation of the amount and date will be given to you at the time of the request	
		• If an error is made in the payment of your Direct Debit by The Campaign for Real Ale Ltd or your bank or building society, you are entitled to a full and immediate refund of the amount paid from your bank or building society	
		• If you receive a refund you are not entitled to, you must pay it back when The Campaign Real Ale Ltd asks you to	
		• You can cancel a Direct Debit at any time by simply contacting your bank or building society. Written confirmation may be required. Please also notify us.	



SUMMERSKILLS

**PROUD TO BE  
PLYMOUTH'S  
OLDEST  
BREWERY**

---

[www.summerskills.co.uk](http://www.summerskills.co.uk)



[summerskills.brewery](https://www.facebook.com/summerskills.brewery)